

POWER CRANK BATTERY



www.powercrank.com.au

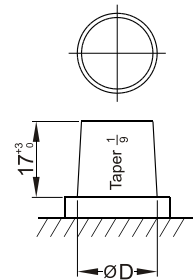


1800040009

SEALED MAINTENANCE FREE
CALCIUM PLUS SILVER AG9 ALLOY

Dimensions (mm)

LAWN MOWER



Standard Terminal (mm)		
Terminal Type	-	
	Positive	Negative
1	19.5 ⁰ _{-0.3}	17.9 ⁰ _{-0.3}

12N24-4 SCMF 350 CCA

Physical Specification (mm)

Nominal Voltage	12V
Dimension	
Length	185mm
Width	125mm
Container Height	158mm
Total Height(with Terminal)	175mm
Weight	Approx 7.4Kg
Acid	1.280±0.015g/cm ³ (25°C)
Standard Terminal	1
Cell layout	1
Hold-Down	B01

Electrical Specification

Cold Cranking Performance Amps@0°F(-18°C)	350CCA
---	--------

Cell Layout

